



OATP1 Polyclonal Antibody

Catalog No	YP-Ab-16491
Isotype	IgG
Reactivity	Human
Applications	WB;IHC;IF;ELISA
Gene Name	SLCO1A2
Protein Name	Solute carrier organic anion transporter family member 1A2
Immunogen	The antiserum was produced against synthesized peptide derived from human SLCO1A2. AA range:251-300
Specificity	OATP1 Polyclonal Antibody detects endogenous levels of OATP1 protein.
Formulation	Liquid in PBS containing 50% glycerol, 0.5% BSA and 0.02% sodium azide.
Source	Polyclonal, Rabbit,IgG
Purification	The antibody was affinity-purified from rabbit antiserum by affinity-chromatography using epitope-specific immunogen.
Dilution	WB: 1/500 - 1/2000. IHC: 1/100 - 1/300. ELISA: 1/20000.. IF 1:50-200
Concentration	1 mg/ml
Purity	≥90%
Storage Stability	-20°C/1 year
Synonyms	SLCO1A2; OATP; OATP1; OATP1A2; SLC21A3; Solute carrier organic anion transporter family member 1A2; OATP-A; Organic anion-transporting polypeptide 1; OATP-1; Sodium-independent organic anion transporter; Solute carrier family 21 member 3
Observed Band	80kD
Cell Pathway	Cell membrane; Multi-pass membrane protein.
Tissue Specificity	Brain,Liver,Teratocarcinoma,
Function	function:Mediates the Na(+)-independent transport of organic anions such as sulfobromophthalein (BSP) and conjugated (taurocholate) and unconjugated (cholate) bile acids.,similarity:Belongs to the organo anion transporter (TC 2.A.60) family.,
Background	This gene encodes a sodium-independent transporter which mediates cellular uptake of organic ions in the liver. Its substrates include bile acids, bromosulphophthalein, and some steroidal compounds. The protein is a member of the SLC21A family of solute carriers. Alternative splicing of this gene results in multiple transcript variants. [provided by RefSeq, Dec 2008],



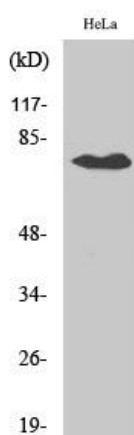
matters needing attention

Avoid repeated freezing and thawing!

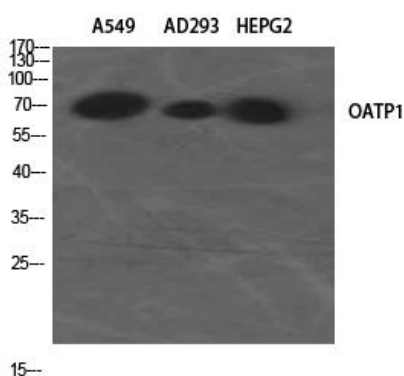
Usage suggestions

This product can be used in immunological reaction related experiments. For more information, please consult technical personnel.

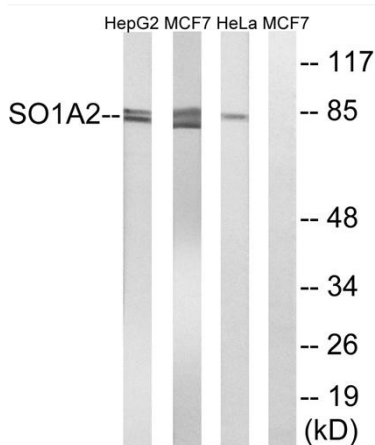
Products Images



Western Blot analysis of various cells using OATP1 Polyclonal Antibody diluted at 1:2000



Western Blot analysis of A549 AD293 HEPG2 using OATP1 Polyclonal Antibody. Antibody was diluted at 1:2000



Western blot analysis of lysates from HeLa, MCF-7, and HepG2 cells, using SLCO1A2 Antibody. The lane on the right is blocked with the synthesized peptide.